

Temperature Monitoring

The Complete Solution for
Server and Plant Rooms



Automated, Real-Time Temperature Monitoring & Alerts.

Abacus Guardian⁺ provides

- ✓ Web Access from Anywhere
- ✓ SMS Text & Email Alarms
- ✓ Quality Audit Trail
- ✓ Product Assurance



www.abacusguardian.com

Temperature monitoring, data logging & alarm systems

The Benefits of Abacus Guardian⁺

As the world becomes more and more reliant on IT services, the role of the server room becomes more and more critical. Such rooms tend to be reliant on chillers, and air conditioners, to maintain a stable temperature. As demand for data increases additional equipment is often installed, all of which generates more heat, putting the cooling plant under increased strain.

A chiller failure can lead to thermal runaway; this can have disastrous consequences. Another risk factor to consider is the relatively high volume of water condensate which accumulates in the chillers. A condensate pump failure or drain leaks are surprisingly common and can spell disaster for the equipment and be highly dangerous.

The Abacus Guardian⁺ server room monitoring solution incorporates the option for temperature, humidity and water leak detection. Detailed, auditable temperature records are a basic requirement of Quality Control. Effective alarm functions provide alerts and peace of mind.

Example Sectors

- ✓ Media Publishing Facilities
- ✓ Housing Management
- ✓ Local Government
- ✓ Entertainment Centres
- ✓ Data Centres
- ✓ Remote Server Installations
- ✓ Radio Repeater Stations

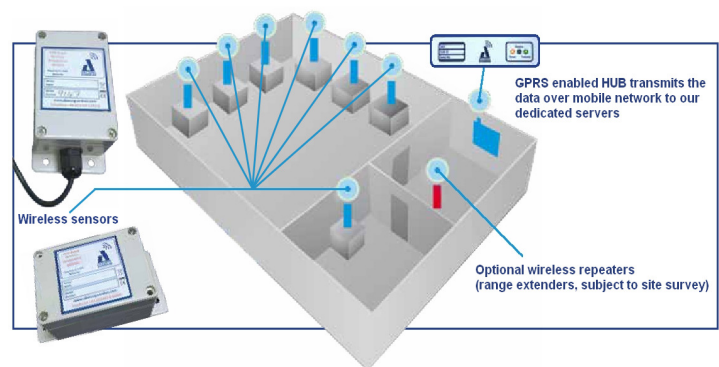
The Abacus Guardian system

- No PC software is required; access to the data is via web-browser on any device with internet connectivity
- Wireless sensors eliminate the need for complicated wiring
- Data uploaded via mobile network - no connection to your network (Ethernet optional)
- Email and text alarms sent to one, or more, recipients
- Sensors and users can be grouped into logical, or geographical, clusters
- Secure data storage with access to real time and historical data
- 24/7 monitoring with recording points every five minutes
- Auditable records help you plan routine servicing & check its effectiveness

How It Works

The system uses two main modules:

- Wireless sensors (battery life >3 years with optional low-battery alarms)
- Base station (Mains powered with optional battery backup supply)



Sensors are installed in the areas to be monitored. The base station sends the data back to our servers. The information is presented to customers, via a website, to manage and view their records and alarms.

PDF and CSV downloads are optionally available.

Simple to navigate

Once the data has been received it is then checked against alarm parameters defined by the customer. If the values fall outside the defined parameters then the system will send a user-defined combination of email and/or SMS text message alarms.

The data is also stored and can be accessed using any web browser protected by a unique username and password. The data can be displayed as live or historical data.

You do not require any special software, or a dedicated PC, to view your data.

Monitoring Critical Data and Alarms

UserID : CHR1SE
Chris Ebsworth (System Admin) Logout

My Menu Manage Input Channels

Home Inputs Groups Locations User Settings Client Settings System Settings Contact Us

Input Channel Management LIST

New Device List Devices Exit

Current Usage
7 Records

Client	Description	Missing Alarm	Hi-Lo Alarm	Device	Channel	Signal	Value	Last Update
MAGNA_ORG	Boldwood Door Switch [Boldwood Comms Room Door]	0	0	57908	7	45	Door 0 (0 is Closed)	11:47 Mon 10th Jul 2017
MAGNA_ORG	BW Comms Room Sensor 1 [BW Comms Room Sensor 1]	0	0	11081	1	48	Temperature 17.00 Deg C	11:50 Mon 10th Jul 2017
MAGNA_ORG	BW Comms Room Sensor 2 [BW Comms Rooms Sensor 2]	0	0	11228	1	48	Temperature 16.00 Deg C	11:47 Mon 10th Jul 2017
MAGNA_ORG	OH Fixed 1 First Alert Temp Sensor [OH Fixed 1 First Alert Temp Sensor]	0	0	9917	1	45	Temperature 18.50 Deg C	11:49 Mon 10th Jul 2017
MAGNA_ORG	OH Fixed 2 Second Alert Temp Sensor [OH Fixed 2 Second Alert Temp Sensor]	0	0	65595	1	47	Temperature 18.50 Deg C	11:47 Mon 10th Jul 2017
MAGNA_ORG	OH Unfixed 1 First Alert Temp Sensor [OH Unfixed 1 First Alert Temp Sensor]	0	0	10065	1	38	Temperature 16.00 Deg C	11:49 Mon 10th Jul 2017
MAGNA_ORG	OH Unfixed 2 Second Alert Temp Sensor [OH Unfixed 2 Second Alert Temp Sensor]	0	0	65604	1	47	Temperature 15.50 Deg C	11:49 Mon 10th Jul 2017

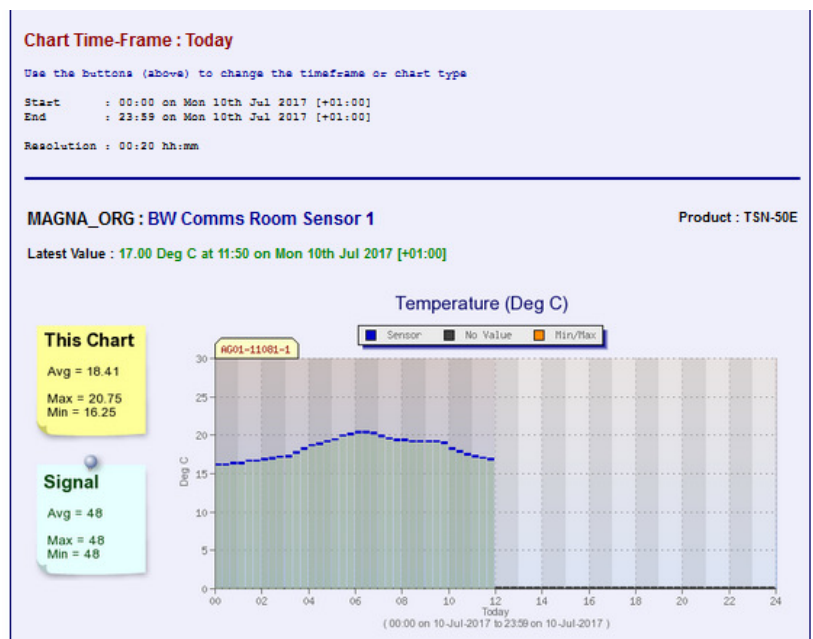
New Device List Devices Exit

Detailed Charts

View your historical records, for a chosen timeframe, at the click of a button

Other measurement types

There are Abacus Guardian+ sensors to monitor many different signal types.



Call us today to find out more - 07366 097 097

or email us at - sales@abacusguardian.com

Our Products and Services are made in Britain



www.abacusguardian.com

Temperature monitoring, data logging & alarm systems